



FROSTY FACTS QUIZ!

HOW MANY WILL YOU GET RIGHT?

1. HOW TALL WAS THE WORLD'S LARGEST SNOWMAN?

- A) 37 METRES
- B) 26 METRES
- C) 12 METRES
- D) 40 METRES

2. WHAT CITY IS THE SNOWIEST PLACE ON EARTH?

- A) TOYAMA, JAPAN
- B) ST JOHN'S, CANADA
- C) ROCHESTER, US
- D) AOMORI, JAPAN

3. HOW LONG CAN A NARWHAL'S TUSK GROW?

- A) 50CM
- B) 1.5 METRES
- C) 3 METRES
- D) 6 METRES

4. THE WORLD'S SMALLEST PENGUIN IS THE 'LITTLE BLUE PENGUIN', APPROXIMATELY HOW TALL IS IT?

- A) 10CM
- B) 26CM
- C) 33CM
- D) 42CM

5. WHAT COLOUR IS A POLAR BEARS SKIN?

- A) WHITE
- B) BLACK
- C) BROWN
- D) GREY

6. HOW MANY MONTHS DOES SNOW FALL IN THE ARTIC?

- A) 3 MONTHS
- B) 5 MONTHS
- C) 7 MONTHS
- D) 10 MONTHS

7. WHAT IS THE LOWEST RECORDED TEMPERATURE IN THE ARTIC?

- A) -70 DEGREE CELSIUS
- B) -85 DEGREE CELSIUS
- C) -100 DEGREE CELSIUS
- D) -115 DEGREE CELSIUS

8. HOW TALL WAS THE BIGGEST RECORDED POLAR BEAR?

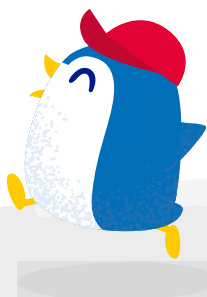
- A) 7FT
- B) 10FT
- C) 15FT
- D) 11FT

9. HOW LONG CAN WALRUSES HOLD THEIR BREATH UNDER WATER?

- A) 14 MINUTES
- B) 30 MINUTES
- C) 42 MINUTES
- D) 1 HOUR

10. HOW HEAVY WAS THE BIGGEST RECORDED POLAR BEAR?

- A) 2000LBS
- B) 500LBS
- C) 1000LBS
- D) 6000LBS



NO PEEKING!

Answers: Q1A / Q2D / Q3C / Q4C / Q5B / Q6C / Q7A / Q8D / Q9B / Q10A

SHARE YOUR SCORE WITH US!

